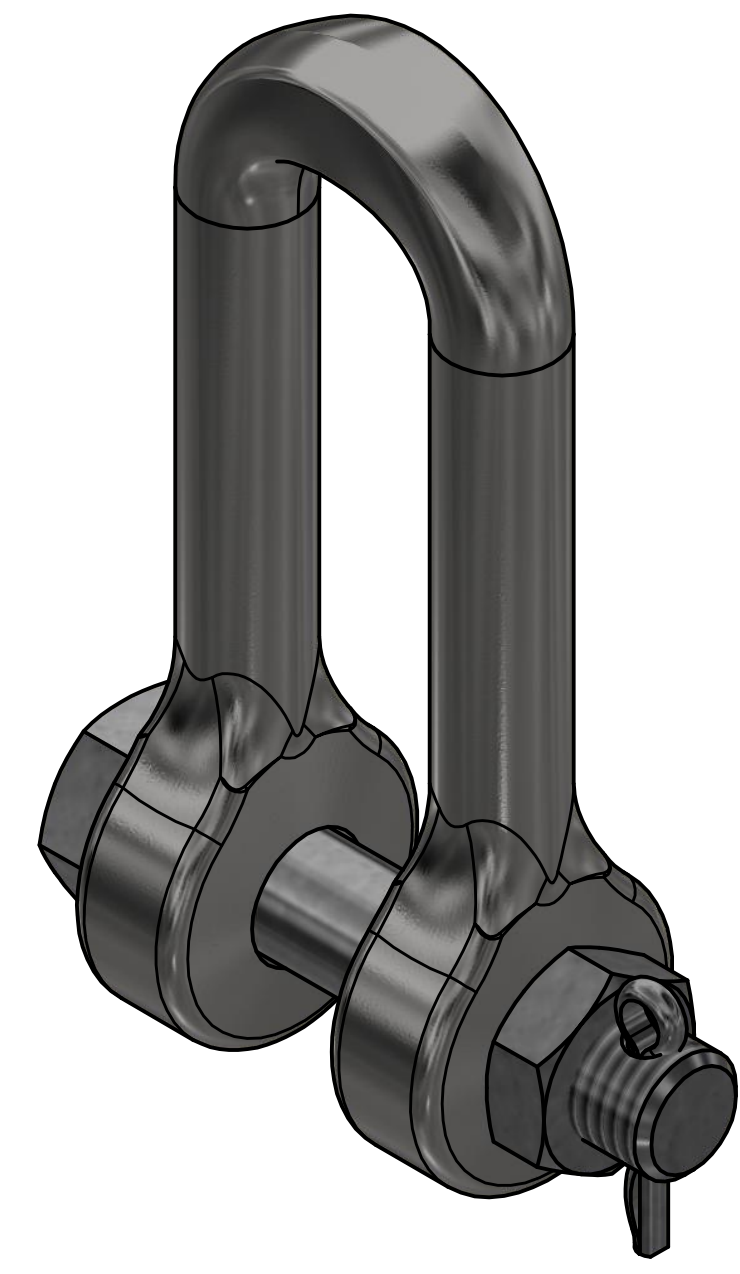
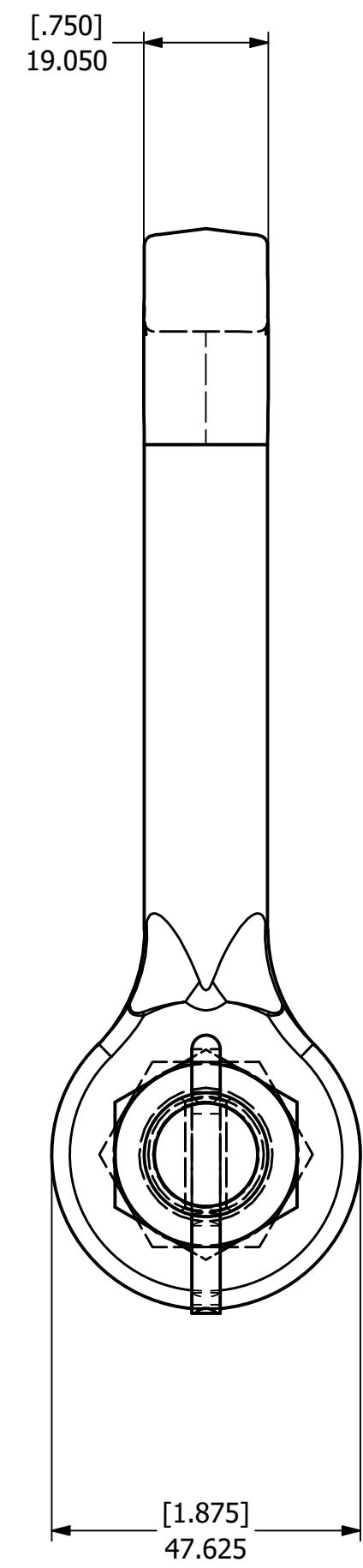
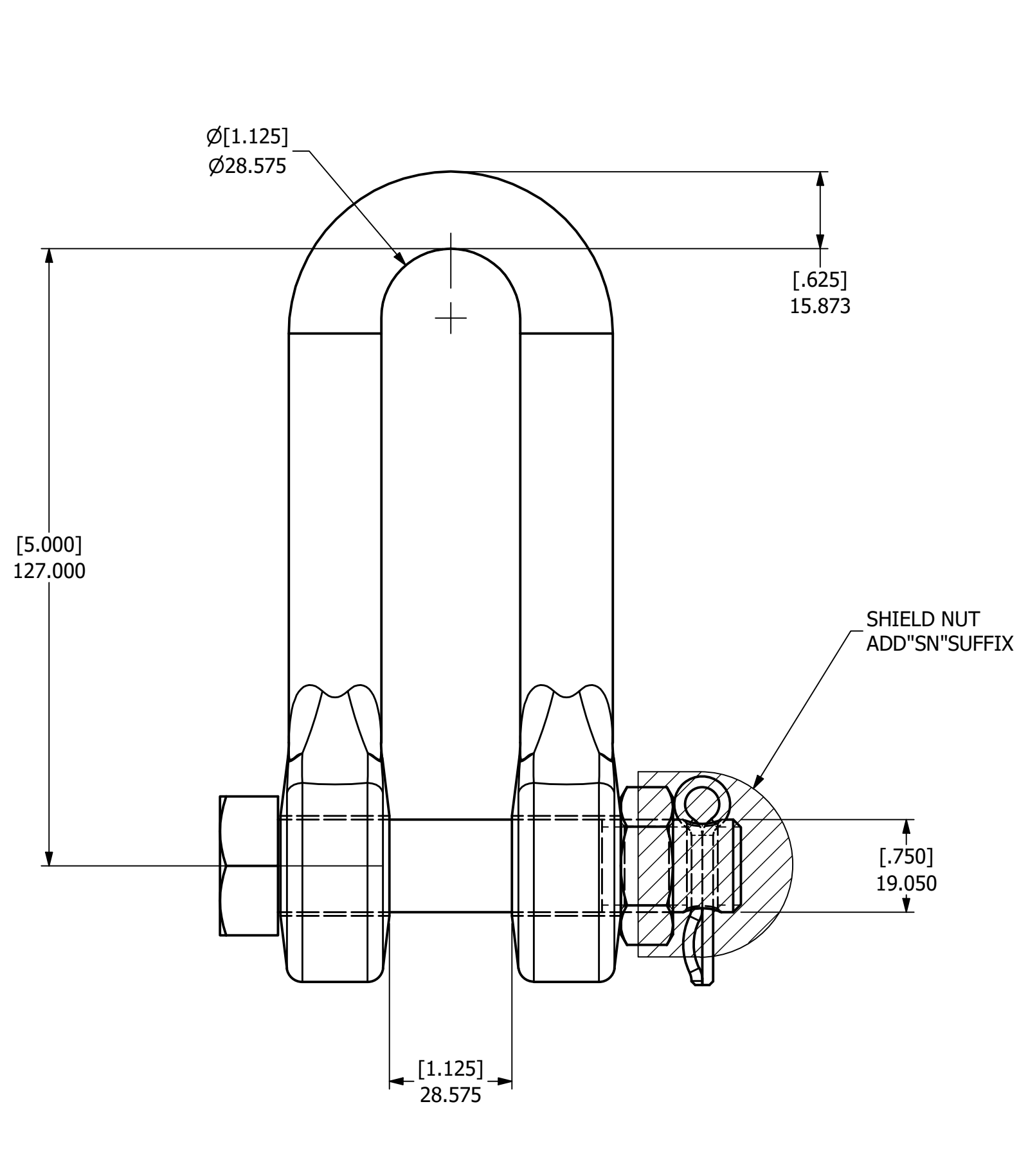


DESCRIPTION	MATERIAL
BODY	C-1038 GALV. STEEL
COTTER PIN	302 STAINLESS STEEL PER ASTM A313 LATEST REVISION
BOLT	ASTM A449 LATEST REVISION OR SAE GRADE 5 GALV. STEEL
NUT	GALV. STEEL PER ANSI B-18-1965
SHIELD NUT	356-T6 ALUMINUM ALLOY



NOTES:

1. ALL DIMENSIONS IN INCHES. [MM]
2. FOR SHIELD NUT ADD "SN" SUFFIX EXAMPLE: 970303002SN

EC #	DATE	CHANGED BY	CHECKED BY	APPROVED BY	 THIRD ANGLE PROJECTION	HUBBELL POWER SYSTEMS, Inc.			
DESCRIPTION:				WEIGHT, LBS		TITLE	ANCHOR SHACKLE		
INITIAL RELEASE				2.98	<small>CONFIDENTIAL: THIS DRAWING AND ITS CONTENTS ARE CONFIDENTIAL AND THE EXCLUSIVE PROPERTY OF HUBBELL POWER SYSTEMS. NO PUBLICATION, DISTRIBUTION OR COPIES MAY BE MADE WITHOUT THE WRITTEN CONSENT OF HUBBELL POWER SYSTEMS. HUBBELL POWER SYSTEMS UNPUBLISHED ALL RIGHTS RESERVED UNDER THE COPYRIGHT LAWS</small>	CATALOG NUMBER: 970303002			
SIZE	DWG NO.	PART / ASSY NO.		REV					
C	CUTSHEET	--		00		SCALE: 1 : 1	DRN BY: KBA	DATE: 6/16/2020	SHEET 1 OF 1
ADDITIONAL COMMENTS: --									